



Myontec Ltd.



BV, Kettlebell University & Alexander King. All Rights Reserved. www.kettlebell.university

2008

Myontec was established as a spin-off from Mega Electronics. The idea behind the company was in democratisation of traditional EMG. Our aim was to take the EMG technology off from laboratory conditions in order to explore the possibility to convert the technology into a wearable.

Research & Technology validation

2012

In 2012, The New York Times listed Myontec smart garment as a third most significant innovation

Concept building & Scientific validation

Company launched industrial manufacture of smart garment - Mbody

2013

Product release & Business development

2014

Prize Winner at the Wearable Technology Innovation World Cup 2014 with the focus on Sports & Leisure

Sales channel building & Development of new solutions

2015

We are already in the Professional Wearables Market: we have a professional solution and the recognition of scientist, researchers and sports organisations. During the next 2-3- years we are looking at further development of our product in order to build an easy to use, valuable and affordable solution for consumers in order to conquer the Big Market. And in parallel we are working on improving our technology and content so we will keep growing aligned with the Professional Market needs.

THE FUTURE OF WEARABLE TECHNOLOGY IN ONE POWERFUL SOLUTION



The technology integrated in Myontec Mbody measures the electrical activity of the muscles (EMG, electromyography). Myontec Mbody is the first product to utilise this technology in real-time sports performance analysis, regardless of the environment or the type of sport. Our technology is validated at scientific level, tested, proven and used by universities and high level training centres and top level sports organisations from around the world.

In Myontec we want to bring this unique technology to everyday sport enthusiasts, to help you understand your human machine and perform at the top of your game. Our slogan, Know your Muscles, defines all we are aiming for



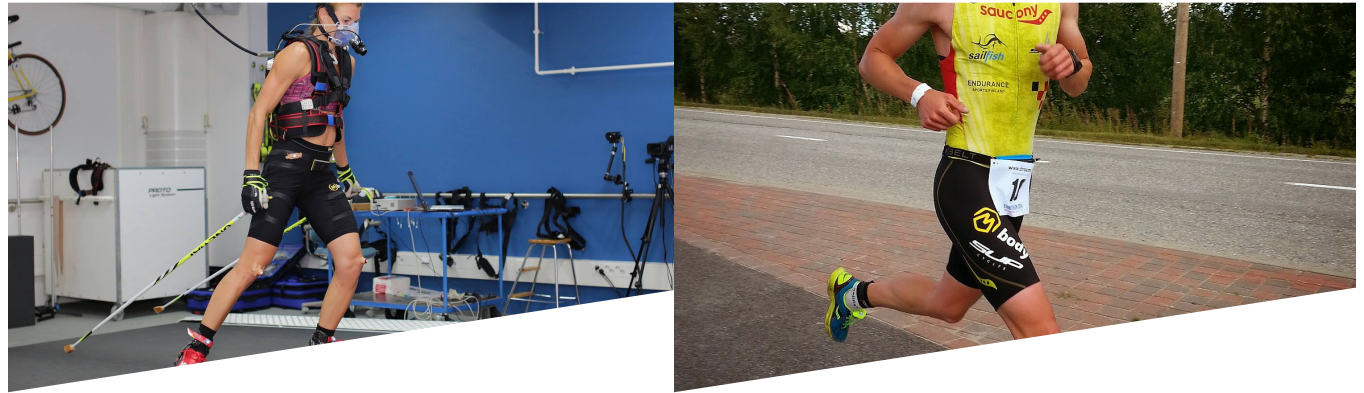
MUSCLE LOAD – MANAGE THE LEVEL OF MUSCLE LOAD AND CHANGES IN THE LOAD

MUSCLE BALANCE – ENSURE THAT THE PHYSICAL STRAIN IS DIVIDED IN BALANCE BETWEEN ALL MUSCLE GROUPS AND REDUCE THE RISK OF POTENTIAL INJURY



MUSCLE RATIO – TRACKS THE RATIO OF YOUR QUADRICEPS AND HAMSTRING AND CHANGES IN IT

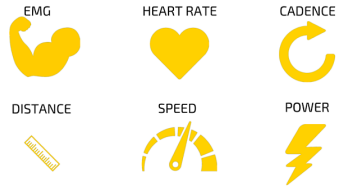
MUSCLE DISTRIBUTION – GET QUANTIFIED ACTIVITY OR THE INDIVIDUAL MUSCLE GROUPS BOTH IN REAL-TIME AND POST ANALYSIS



THE MOST COMPREHENSIVE AND ADVANCED TRAINING SYSTEM OUT THERE

Myontec Mbody offers valid and reliable EMG data added with ease-of-use, convenience, and applicability in the field. In Mbody all the electronics, wiring and sensors are seamlessly integrated in high-quality compression sportswear. Small, light-weight EMG unit with high frequency sampling rate, memory and wireless communication is being attached to the textile. Mbody is an intelligent garments that measures your muscles activity, and offers its users a new dimension in understanding muscles behavior while doing any kind of exercise.

THE COMPLETE HUMAN PERFORMANCE LAB IN ONE WEARABLE SOLUTION



POWERFUL ANALYSIS FEATURES



FULL SET OF CHARTING TOOLS



ANALYSE, OPTIMIZE & ENHANCE



MONITOR, DETECT, TARGET & PREVENT



POWER OF SCIENTIFIC DATA ANALYSIS WITH THE EASE OF HIGH-TECH WEARABLE SOLUTION

Muscle Monitor software is created and designed to suit the needs of professionals who are searching for deeper knowledge and accuracy. Myontec Muscle Monitor is your personal magnifying glass inside human machine. Complete breakdown of human biosignals allows you to conduct the most accurate and objective analyses of performance and biomechanics giving you the keys for further advancement and evolvement.